

# YOUR SERVICE LINE IS OF UNKNOWN SERVICE LINE MATERIAL

This notice contains important information about your drinking water. Please share this information with anyone who drinks and/or cooks using water at this property. In addition to people directly served at this property, this can include people in apartments, nursing homes, schools, businesses, as well as parents served by childcare at this property.

MCAS Cherry Point is working to identify service line materials throughout the water system and has determined that the water pipe (called a service line) that connects your building (**Service Line Location: 83, 133, 293, 1646, 1799, 3898, 3916, 4036, 4067, 4156, 4213, 4214, 4215, 4221, and 4228; Residential/Childcare Facilities: None**) to the water main is made from **UNKNOWN MATERIAL**.

Because your service line material is unknown, there is the potential that some or all of the service line could be made of lead or galvanized pipe that was previously connected to lead. Galvanized service lines that have adsorbed lead can contribute to lead in drinking water. People living in homes with a lead or galvanized pipe previously connected to a lead service line have may have increased risk of exposure to lead from their drinking water. The Marine Corps Air Station water system is in compliance with USEPA lead and copper rule action levels, but we need to do some further investigation to determine if these lines require replacement. The action level for lead is 0.010 mg/L (10 ppb) for lead and 1.3 mg/L (1300 ppb) for copper. If you have questions concerning any of the information provided in this notice, or if you have information that could help us better describe your service line, contact us via: Public Works Drinking Water Facility (466-2520) or the Environmental Affairs Dept (466-5917).

## Health effects of lead

Exposure to lead in drinking water can cause serious health effects in all age groups. Infants and children can have decreases in IQ and attention span. Lead exposure can lead to new learning and behavior problems or worsen existing learning and behavior problems. The children of women who are exposed to lead before or during pregnancy can have increased risk of these negative health effects. Adults can have increased risks of heart disease, high blood pressure, and kidney, or nervous system problems.

## Steps you can take to reduce lead in drinking water.

Below are recommended actions that you may take, separately or in combination, if you are concerned about lead in your drinking water. The list also includes where you may find more information and is not intended to be a complete list or to imply that all actions equally reduce lead in drinking water.

**Use filters properly.** Using a filter can reduce lead in drinking water. If you use a filter, it should be certified to remove lead. Read any directions provided with the filter to learn how to properly install, maintain, and use your cartridge and when to replace it. Using the cartridge after it has expired can make it less effective at removing lead. Do not run hot water through the filter. For more information on facts and advice on home water filtration systems, see EPA's <https://www.epa.gov/water-research/consumer-tool-identifying-point-use-and-pitcher-filters-certified-reduce-lead>.

**Clean your aerator.** Regularly clean your faucet's screen (also known as an aerator). Sediment, debris, and lead particles can collect in your aerator. If lead particles are caught in the aerator, lead can get into your water.

**Use cold water.** Do not use hot water from the tap for drinking, cooking, or making baby formula as lead dissolves more easily into hot water. Boiling water does not remove lead from water.

**Run your water.** The more time water has been sitting in pipes providing water to your home, the more lead it may contain. Before drinking, flush your home's pipes by running the tap, taking a shower, doing laundry, or doing a load of dishes. The amount of time to run the water will depend on whether your home has a lead service line or not, as well as the length and diameter of the service line and the amount of plumbing in your home.

## Notice Of Service Line Material

Water System Name:

MCAS Cherry Point

Water System Number:

NC0425035

System Contact Info

Name:

Rich Weaver

Phone Number:

252-466-5917

Date Notice Distributed:

11/26/2024

Distribution Method:

all hands email and hand delivered

## Get your child tested to determine lead levels in their blood.

If you have any health-related questions or concerns about lead exposure or a blood lead test, you are encouraged to contact your health care provider, or if you are a TRICARE beneficiary, use the REGION Appointment Center to schedule an appointment with your primary care provider at 252-466-0921.

In the United States, state, city, or county departments of health departments can also provide information about how you can have your child's blood tested for lead. The Centers for Disease Control and Prevention and the Marine Corps recommend public health actions when the level of lead in a child's blood is 3.5 micrograms per deciliter ( $\mu\text{g}/\text{dL}$ ) or more. For more information and links to the CDC's website, please visit <https://www.epa.gov/ground-water-and-drinking-water/basic-information-about-lead-drinking-water>.

For more information on reducing lead exposure from your drinking water and the health effects of lead, visit EPA's website at <http://www.epa.gov/lead>.

To learn more about the quality of the drinking water on this installation, visit our Annual Consumer Confidence Water Quality Report at:

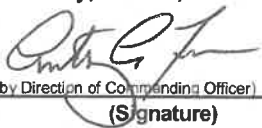
<https://www.cherrypoint.marines.mil/Portals/86/Docs/WaterQualityReports/CCR2023aCherryPoint.pdf>

These notices can also be accessed at our Installation Public Documents Webpage at:

[https://www.cherrypoint.marines.mil/Portals/86/Docs/EA/Docs/MCASCP\\_Memo\\_LSLI\\_07302024\\_Final.pdf?ver=ghfVuGcJTb-bnWsLB8LWxQ%3d%3d](https://www.cherrypoint.marines.mil/Portals/86/Docs/EA/Docs/MCASCP_Memo_LSLI_07302024_Final.pdf?ver=ghfVuGcJTb-bnWsLB8LWxQ%3d%3d)

### Service Line Material Notice Certification

The public water system named above hereby certifies that the Notice of Service Line Material has been provided to its consumers in accordance with all delivery, content, format and deadline requirements specified in 15A NCAC 18C .1507 [141.85(e)].

Owner/Operator:  (by Direction of Commanding Officer)  
(Signature)

Anthony A. Ference  
(Print Name)

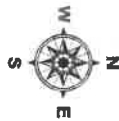
25 Nov '24  
(Date)

**Service Line Type Unknown - Section I**

**CUI**



**Legend**  
 Service Line Type Unknown



**SCALE 1:1,519**  
 0 0.02 0.05 0 0.03  
 0 0.015 0 0.03  
 Kilometers  
 0 0.03  
 Miles

SPHEROID: ..... GEODETIC REFERENCE SYSTEM 1983  
 PROJECTION: ..... UNIVERSAL TRANSVERSE MERCATOR  
 AUTHORITY: ..... NORTH AMERICAN DATUM 1983  
 HORIZONTAL DATUM: ..... USGS NATIONAL GEODETIC SURVEY POINTS  
 CONTROLLED BY: ..... 1000-METER UTM ZONE 18  
 GRID: ..... 1000-METER UTM ZONE 18  
 CONTOUR INTERVAL: ..... ONE METER LAMBERT HORIZONTAL FOOT  
 ELEVATION UNITS: ..... FEET



Prepared 11/18/2024  
 by Timothy S. Ward  
 GIS Analyst / BLDG 87 FAWD  
 MCAAS-Cherry Point, NC  
 timothy.ward.ct@usmc.mil  
 (252) 466-4783



**NOT TO BE USED FOR TARGETING OR NAVIGATION**

CUI: Google Unclassified Information  
 Control Authority: USMC  
 Control Category: CT 1000M U.S.  
 Distribution Authority: 1000M U.S.  
 Distribution Control: 1000M U.S.  
 Other requests for this document shall be  
 referred to OASD(ISA), DSSD Program  
 POC: hspj@usmc.mil; hspj@usmc.mil

**CUI Category: GEODCTI**

Distribution/Dissemination Controls: Distribution D - Distribution authorized to Department of Defense and U.S. DoD contractors only. Other requests for this document shall be referred to the organization, office, or POC responsible for its production.

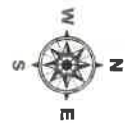
**CUI**

**Service Line Type Unknown - Section II (BLDGs 1646,4228)**

**CUI**



**Legend**  
 Service Line Type Unknown



**SCALE 1:981**  
 0.02 0.01 0 0.02  
 Kilometers  
 0.015 0.0075 0 0.015  
 Miles

SPHEROID: GEOCENTRIC REFERENCE SYSTEM 1980  
 PROJECTION: UTM  
 AUTHORITY: TRANSVERSE MERCATOR  
 HORIZONTAL DATUM: NORTH AMERICAN DATUM 1983  
 CONTROLLED BY: USGS NATIONAL GEODETIC SURVEY POINTS  
 GRID: 1000 METERS UTM ZONE 18  
 CONTOUR INTERVAL: ONE METER  
 ELEVATION UNITS: FEET



Prepared 11/18/2024  
 by Timothy S. Ward  
 GIS Analyst / BLDG 87 FAHD  
 MCAS-Cherry Point, NC  
 timothy.ward.cd@usmc.mil  
 (252) 465-4783



**FOR REFERENCE ONLY  
 NOT TO BE USED FOR TARGETING OR NAVIGATION**

CUI - Classified Unclassified Information  
 Controlled by OASD Statement  
 Distribution Category: C1  
 DOD AND U.S.  
 DOD Contractors only: 11/18/2024  
 Other requests for this document shall be  
 referred to the document manager:  
 POC: cdi.perkins@usmc.mil; mdr.deter-helms@usmc.mil

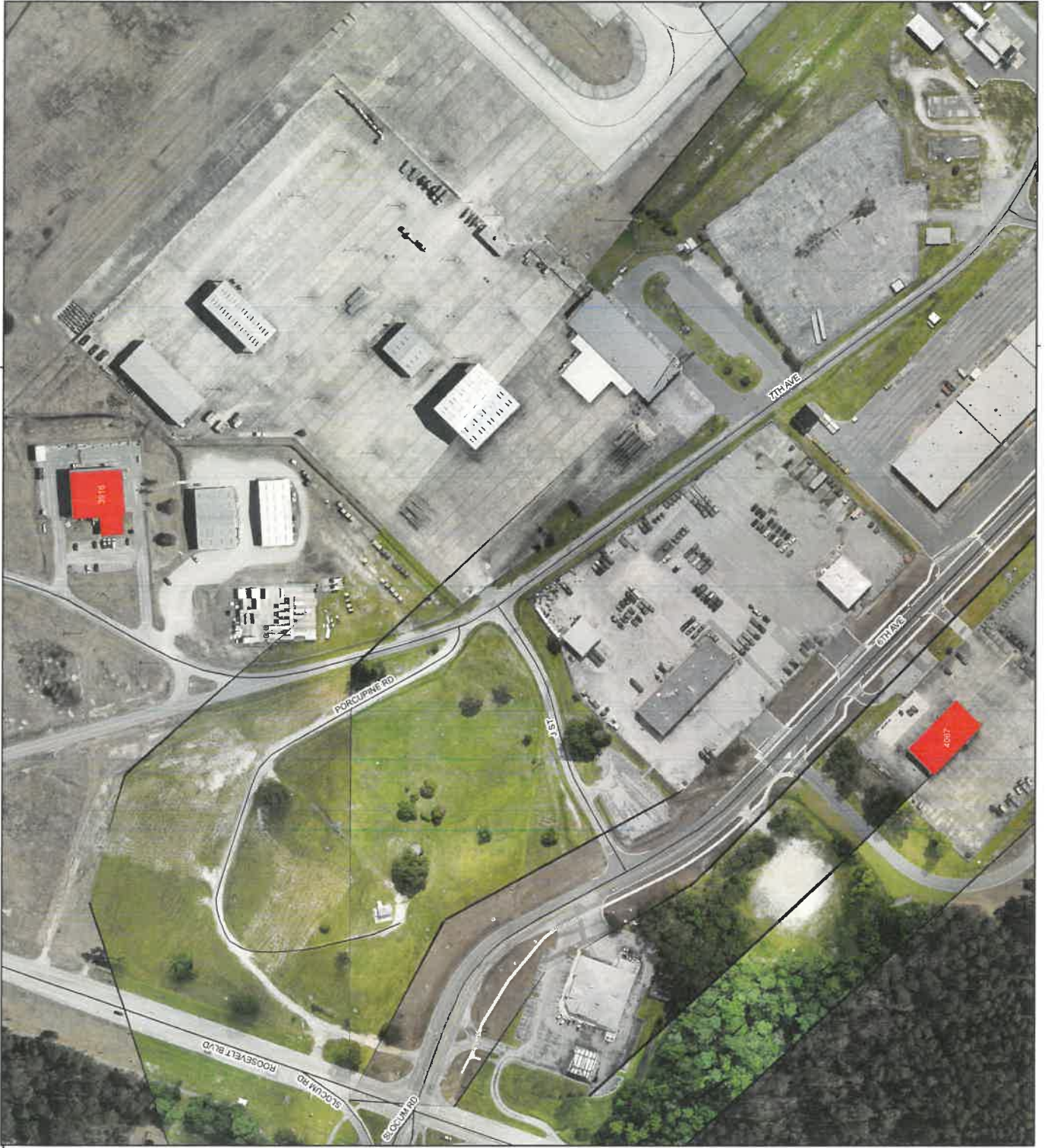
**CUI Category: GEOCTI**

Distribution/Dissemination Controls: Distribution D - Distribution authorized to Department of Defense and U.S. DOD contractors only. Other requests for this document shall be referred to the organization, office, or POC responsible for its production.

**CUI**

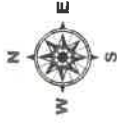
CUI

# Service Line Type Unknown - Section III



**Legend**

Service Line Type Unknown



**SCALE 1:1,621**

0 0.015 0.03 Kilometers

0 0.015 0.03 Miles

SPEEDWAY ..... GEODETIC REFERENCE SYSTEM 1980  
 VERTICAL DATUM ..... NORTH AMERICAN VERTICAL DATUM 1988  
 HORIZONTAL DATUM ..... NORTH AMERICAN DATUM 1983  
 CONTROLLED BY ..... USGS NATIONAL 100-METER BATHYMETRIC  
 GRID ..... ONE MINUTE LATITUDE-LONGITUDE TICS  
 CONTOUR INTERVAL ..... 20 FOOT  
 ELEVATION UNITS ..... FEET



Prepared 11/16/2024  
 by Timothy S. Ward  
 GIS Analyst/BLDG 87 FAMD  
 MCAS-Cherry Point, NC  
 timothy.ward@usmc.mil  
 (252) 466-4765



**FOR REFERENCE ONLY  
 NOT TO BE USED FOR TARGETING OR NAVIGATION**

CUI - Controlled Unclassified Information  
 Controlled by OASD Customer  
 Distribution Authorized to DOD and U.S.  
 OIG Contractors only. 11/16/2024 shall be  
 referred to OASD(S), DISDI Program  
 POC: oasd.pentagon.oused-at.fmc.dtic.helpdesk@gmail.com

CUI Category: CEOICTI

Distribution/Dissemination Controls: Distribution D - Distribution authorized to Department of Defense and U.S. DOD contractors only. Other requests for this document shall be referred to the organization, office, or POC responsible for its production.

CUI

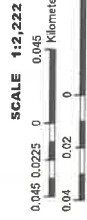
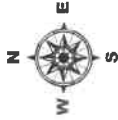
CUI

# Service Line Type Unknown - Section IV



N.055.PC

**Legend**  
Service Line Type Unknown



SHEI000 ..... GEODETIC REFERENCE SYSTEM 1983  
 VERT DATUM ..... NORTH AMERICAN DATUM 1983  
 HORIZONTAL DATUM ..... NORTH AMERICAN DATUM 1983  
 CONTROLLED BY ..... USGS NATIONAL GEODETIC SURVEY POINTS  
 GRAVITY ..... GRAVITY  
 DATUM ..... ONE MINUTE LATITUDE/LONGITUDE TICS  
 CONTOUR INTERVAL ..... 20 FOOT  
 ELEVATION UNITS ..... FEET



Prepared 11/18/2024  
 by Timothy S. Ward  
 GIS Analyst / BLDG 87 FAMD  
 MCAS-Cherry Point, NC  
 timothy.ward.ctr@usmc.mil  
 (252) 466-4783



**FOR REFERENCE ONLY  
NOT TO BE USED FOR TARGETING OR NAVIGATION**

CUI - Contained Unclassified Information  
 Controlled by OASD Sustainment  
 Distribution Authority: OASD Sustainment  
 Distribution Authorized to DOD and U.S.  
 DoD Contractors only; 11/18/2024  
 Referenced to OASD(S), DISCI Program  
 POC: oasd.pentagonvoiced-stf.cbr.dhhd-hq-hq-hq@mail.mil

CUI Category: GEOCTI

Distribution/Dissemination Controls: Distribution D - Distribution  
 authorized to DoD and U.S. DoD contractors only.  
 Other requests for this document shall be referred to the organization,  
 office, or POC responsible for its production.

CUI

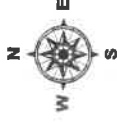
CUI

# Service Line Type Unknown - Section V



**Legend**

Service Line Type Unknown



**SCALE 1:4,541**

0.09 0.045 0 0.045 0.09 Kilometers

0.09 0.045 0 0.045 0.09 Miles

SERIOD ..... GEODETIC REFERENCE SYSTEM 1983  
 HORIZONTAL DATUM ..... NORTH AMERICAN DATUM 1983  
 VERTICAL DATUM ..... NORTH AMERICAN DATUM 1983  
 HORIZONTAL DATUM ..... NORTH AMERICAN DATUM 1983  
 CONTROLLED BY ..... USGS NATIONAL GEODETIC SURVEY POINTS  
 DATUM ..... NORTH AMERICAN DATUM 1983  
 CONTROLLER ..... ONE MINUTE LATITUDE/LONGITUDE TICS  
 CONTOUR INTERVAL ..... 20 FOOT  
 ELEVATION UNITS ..... FEET



Prepared 11/18/2024  
 by Timothy S. Ward  
 GIS Analyst / BLDG 87 FAMD  
 MCAS-Cherry Point, NC  
 timothy.ward.ctr@usmc.mil  
 (252) 466-4783



**FOR REFERENCE ONLY**  
**NOT TO BE USED FOR TARGETING OR NAVIGATION**

CUI - Controlled Unclassified Information  
 Controlled by OASD Sustainment  
 Distribution Authority: OASD Sustainment  
 Distribution Authorized to DOD and U.S.  
 DoD Contractors only; 11/18/2024  
 Reference to OASD(S), DISD Program  
 POC: oasd.pentagon.oversat.rbr.dhhd-ha@oasd.mil

CUI Category: GEOCTI

Distribution/Dissemination Controls: Distribution D - Distribution  
 Authorized to DOD and U.S. DoD Contractors only.  
 Other requests for this document shall be referred to the organization,  
 office, or POC responsible for its production.

CUI